

Munnell Run Farm

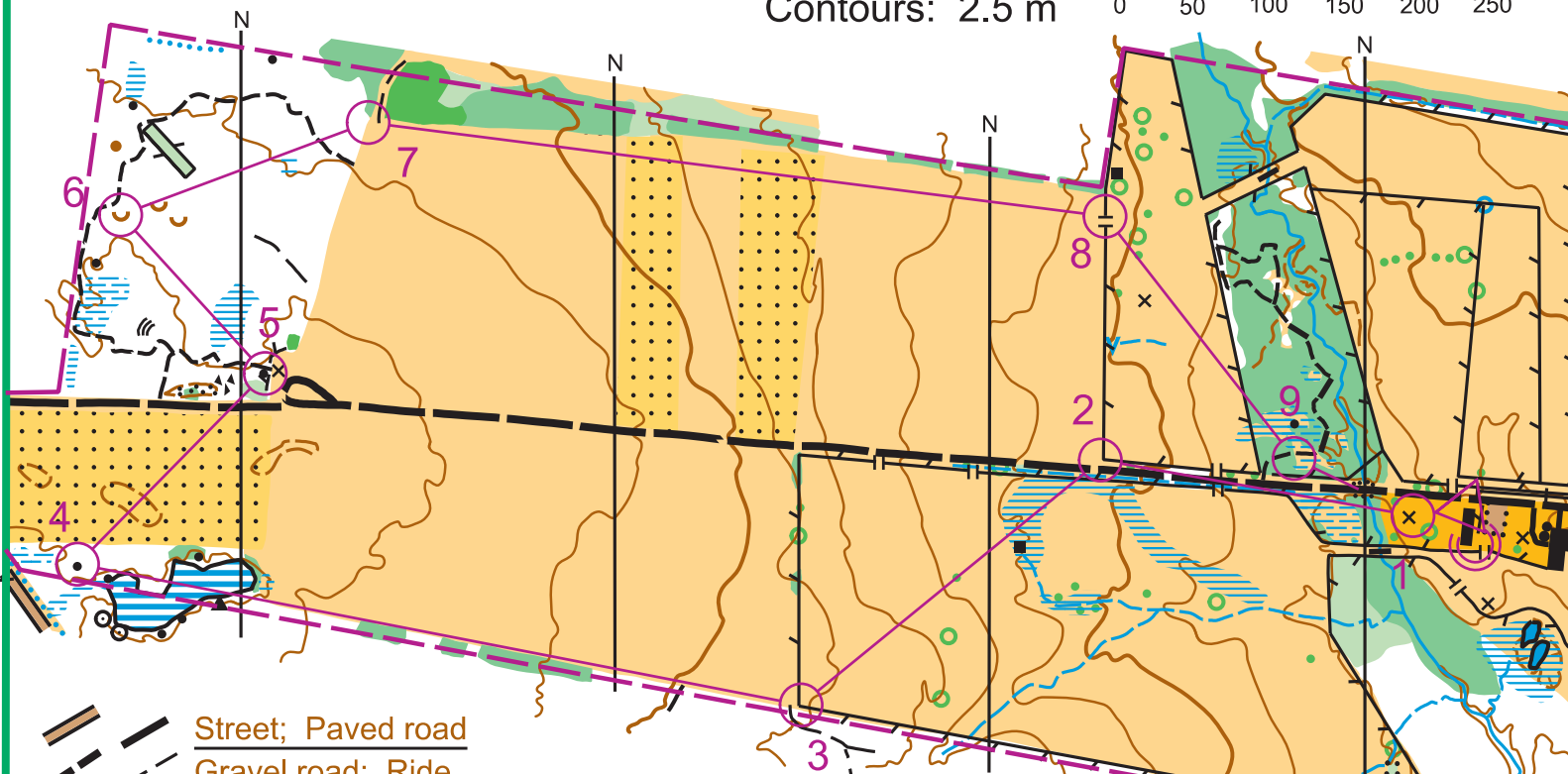
Orienteering Map

Scale: 1 : 5 000
Contours: 2.5 m

Copyright: Western PA Orienteering Club
May 2017; All Rights Reserved

Meters
0 50 100 150 200 250

North lines are drawn to
Magnetic North



Munnell Run Farm		
Novice		2.3 km
		Start: N side of building
1	1	NE side of special item
2	2	SW outside corner of fence
3	3	SW outside corner of fence
4	4	N side of boulder
5	5	N side of boulder
6	6	N side of small depression
7	7	NW inside corner of open land
8	8	N side of gate
9	9	W end of path and marsh crossing
Navigate 130 m to finish		

- Street; Paved road
- Gravel road; Ride
- Footpath; Sm footpath
- Fence; Gate
- Powerline; Stone wall
- Buildings; Ruin
- Boulder; Boulder field
- Boulder Cluster; Cairn
- Rocky ground; Bridge
- Amphitheater; Tower
- Vegetation Boundary
- Man-made object; Light
- Private land; Boundary
- Dangerous area

- Contours; Index contour
- Form line; Depression
- Sm depression; Knoll
- Pond; Trough
- Stream; Seasonal stream
- Marsh; Seasonal marsh
- Narrow marsh; Sm marsh
- Uncrossable marsh
- Spigot; Waterhole
- Open Forest; Slow
- Difficult; Impassable
- Distinct Tree; Copse

- Open; Rough Open
- Open & Rough Open with scattered trees
- Cultivated Land*
- Parking area; Concrete

*Which land is cultivated varies year to year.
This map shows an example year.

Images & LIDAR Data: PASDA
Field Work & Cartography: Jim Wolfe

For more information:
Call 814 255-6606 or go to www.wpoc.org



This course made possible through the efforts of Rebekah Gaber for her Silver Award project.